

## P01 SDCV RELIEF / SUSTAINING VALVE

TYPE: 23 Series  
MWP: 1600kPa

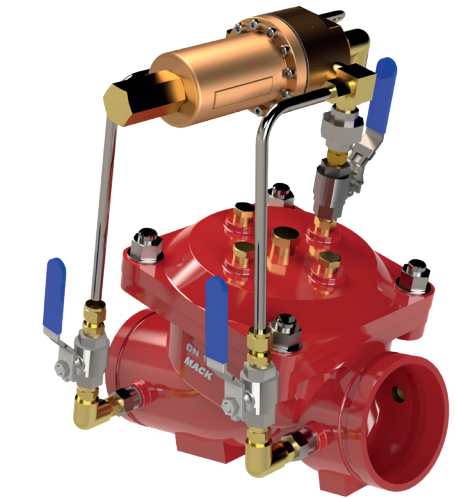
The 23 series is a cost effective, reliable product designed specifically for applications in the building services, fire services, mining and irrigation markets. The reinforced diaphragm is designed to operate across the complete pressure range of the valve, providing leak tight shut off and stable control.

The Body and Cover are manufactured from FBE coated Ductile iron for added strength, reduced weight and corrosion protection.

### Applications:

Maintains upstream or inlet pressure to required set point. These valves are commonly used to bleed off excess system pressure or protect critical services from being starved of water.

Quick opening and smooth closing they offer a significant improvement in system performance and quietness compared to traditional direct acting relief valves.



### Sizing and Performance

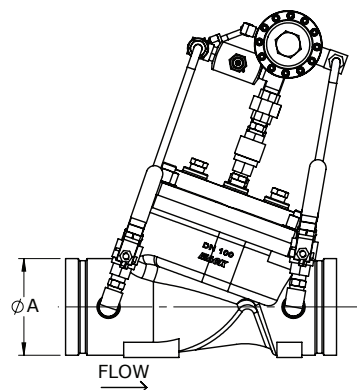
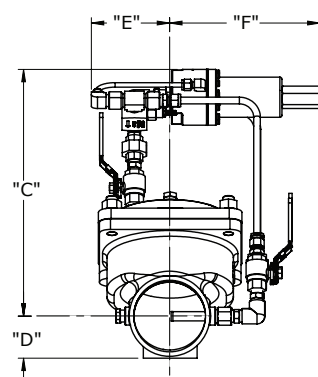
Maximum operation pressure 1600kPa  
Minimum differential pressure 35 kPa  
Maximum operating tempature 70c

### ACTIVFIRE Approvals

Mack series 23 valves have been assessed by the CSIRO as conforming to the relevant sections of Australian Standards: 4118.1.5-1996 & 4118.1.8-1999

### Single Diaphragm Control Valves

23		#			##			###
Base No.	-	Body Material		-	Pilot Configuration		-	Size
23		6	Ductile Iron		13	Sustaining / Relief		050
23		6	Ductile Iron		13	Sustaining / Relief		080
23		6	Ductile Iron		13	Sustaining / Relief		100
23		6	Ductile Iron		13	Sustaining / Relief		150

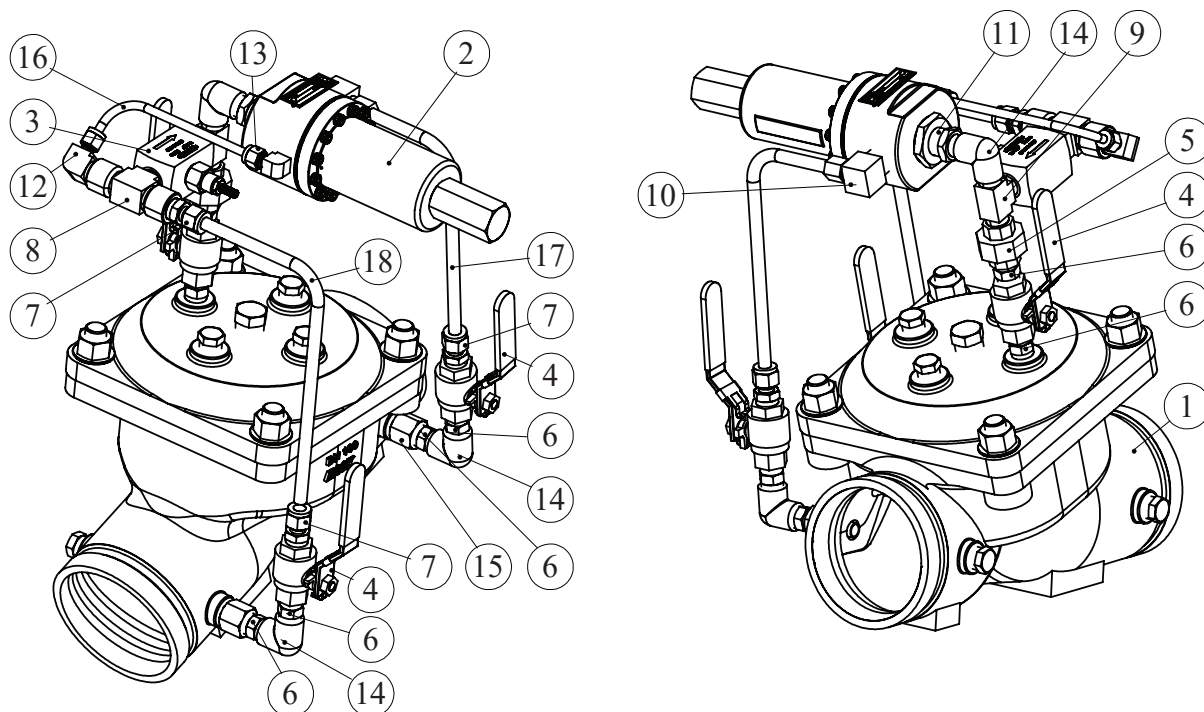


Dimensions										Volume of cover chamber (L)	Weight (Kg)	
	A Inlet OD	B Length	C C/Line To Top	D C/Line To Bottom	E Width	F Width	Flow Range (L/sec)	LPS/√kPa	USGPM/√psi			m3/Hr/√M
50mm	60.3	205	310	35	100	240	0.7-14.5	1.45	60.6	4.5	0.16	10
80mm	88.9	250	340	50	105	235	1.5-28.0	2.95	122.9	9.2	0.38	16
100mm	114.3	320	350	60	115	215	1.8-50.0	5.10	214.5	15.8	0.73	23.5
150mm	165.1	415	430	85	145	220	2.5-112.0	11.50	476.0	35.6	2.00	51

## SDCV RELIEF/SUSTAINING VALVE

**P  
02**

TYPE: 23 Series  
MWP: 1600kPa



Item No.	Part Number	Description	Material	Qty
01	23-6-XXX	SDCV MAIN VALVE ASSY.	Refer BOM	01
02	427-1-015	PRESSURE SUSTAINING/RELIEF. PILOT.	Refer BOM	01
03	428-2-010	NEEDLE VALVE.	Refer BOM	01
04	5098-010	BALL VALVE BSPT.	SS/PTFE	03
05	9202-C03-034	BARREL UNION 3/8" BSPP FEMALE x FEMALE.	A.B.BRASS	01
06	9215-C03-034	HEX NIPPLE 3/8" BSPT MALE.	A.B.BRASS	06
07	9206-C03-034	STRAIGHT CONNECTOR, 3/8" BSPT x 3/8" TUBE.	A.B.BRASS	03
08	9235-C03-034	FEMALE BRANCH TEE 3/8" BSPT.	A.B.BRASS	01
09	9234-C03-034	ALL MALE TEE 3/8" BSPT.	A.B.BRASS	01
10	9213-C03-034	ELBOW 1/2" BSPT MALE x 3/8" TUBE.	A.B.BRASS	01
11	9221-D03-034	REDUCING NIPPLE.	A.B.BRASS	01
12	9213-A02-034	ELBOW 1/8" BSPT MALE x 1/4" TUBE.	A.B.BRASS	01
13	9213-C02-034	ELBOW 3/8" BSPT MALE x 1/4" TUBE.	A.B.BRASS	01
14	9209-C03-034	ALL FEMALE ELBOW, 3/8" BSPT.	A.B.BRASS	03
15	7116-001-360	BUSH.	S.S. A479	01
16	7105-024-021	1/4" SENSE TUBE TO BE TRIMMED.	S.S.	01
17	7105-027-021	3/8" OUTLET TUBE TO BE TRIMMED.	S.S.	01
18	7105-027-021	3/8" INLET TUBE TO BE TRIMMED.	S.S.	01

## P03 SDCV REDUCING VALVE

TYPE: 23 Series  
MWP: 1600kPa

The 23 series is a cost effective, reliable product designed specifically for applications in the building services, fire services, mining and irrigation markets. The reinforced diaphragm is designed to operate across the complete pressure range of the valve, providing leak tight shut off and stable control.

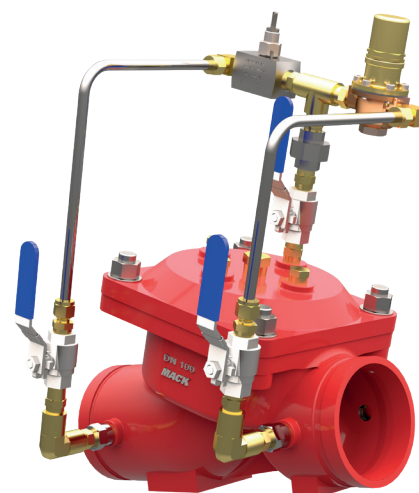
The Body and Cover are manufactured from FBE coated Ductile iron for added strength, reduced weight and corrosion protection.

### Applications:

Maintains a constant (lower) downstream pressure irrespective of Inlet pressure fluctuations.

Pressure reducing valves are commonly used to limit excessive pressures on downstream piping and equipment caused by excessive gradients and building height.

They are also useful in limiting water usage by restricting downstream pressure and losses.



### Sizing and Performance

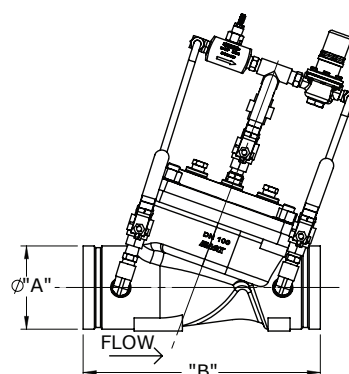
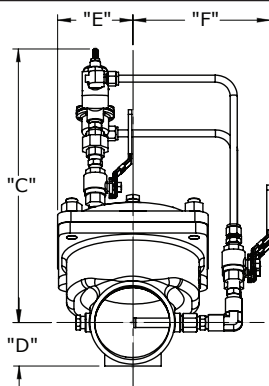
Maximum operation pressure 1600kPa  
Minimum differential pressure 35 kPa  
Maximum operating temperature 70°C

### ACTIFIRE Approvals

Mack series 23 valves have been assessed by the CSIRO as conforming to the relevant sections of Australian Standards: 4118.1.5-1996 & 4118.1.8-1999

### Single Diaphragm Control Valves

23		#			##			###
Base No.	-	Body Material		-	Pilot Configuration		-	Size
23		6	Ductile Iron		18	Pressure Reducing		050
23		6	Ductile Iron		18	Pressure Reducing		080
23		6	Ductile Iron		18	Pressure Reducing		100
23		6	Ductile Iron		18	Pressure Reducing		150

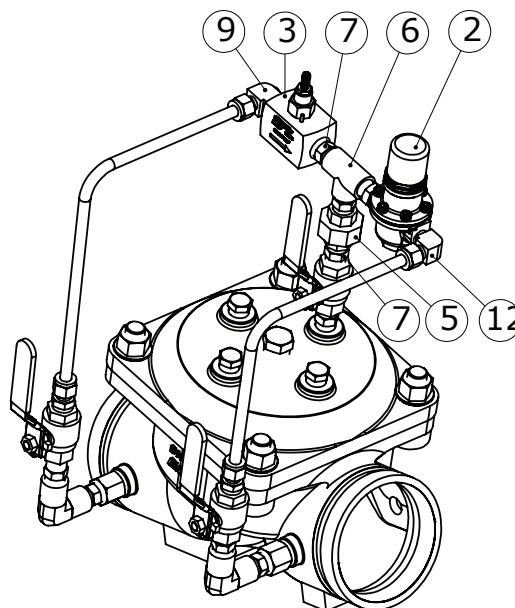
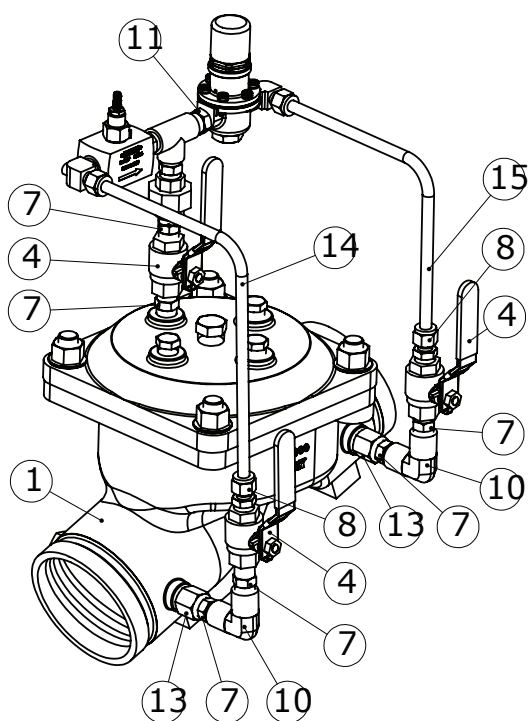


Dimensions										Volume of cover chamber (L)	Weight (Kg)	
	A Inlet OD	B Length	C C/Line To Top	D C/Line To Bottom	E Width	F Width	Flow Range (L/sec)	LPS/√kPa	USGPM/√psi			m3/Hr/√M
50mm	60.3	205	320	35	65	170	0.7-14.5	1.45	60.6	4.5	0.16	7
80mm	88.9	250	350	50	90	175	1.5-28.0	2.95	122.9	9.2	0.38	13
100mm	114.3	320	380	60	105	185	1.8-50.0	5.10	214.5	15.8	0.73	20.5
150mm	165.1	415	440	85	145	220	2.5-112.0	11.50	476.0	35.6	2.00	48

## SDCV REDUCING VALVE

**P  
04**

TYPE:23 Series  
MWP: 1600 kPa



Item No.	Part Number	Description	Material	Qty
01	23-6-XXX	SDCV MAIN VALVE ASSY.	Refer BOM	01
02	7838X-A9-008	REDUCING VALVE	Refer BOM	01
03	428-2-010	NEEDLE VALVE	Refer BOM	01
04	5098-010	BALL VALVE BSPT	SS/PTFE	03
05	9202-C03-034	BARREL UNION 3/8" BSPP FEMALE x FEMALE	A.B.BRASS	01
06	9224-C03-034	ALL FEMALE TEE 3/8" BSPT	A.B.BRASS	01
07	9215-C03-034	HEX NIPPLE 3/8 BSPT MALE	A.B.BRASS	08
08	9206-C03-034	STRAIGHT CONNECTOR 3/8 BSPT X 3-8" TUBE	A.B.BRASS	02
09	9213-C03-034	ELBOW CONNECTOR 3/8 BSPT X 3-8" TUBE	A.B.BRASS	01
10	9209-C03-034	ELBOW 3/8" BSPT FEMALE - FEMALE	A.B.BRASS	02
11	9221-D03-034	REDUCING NIPPLE	A.B.BRASS	01
12	9213-B03-034	1-4" BSPT X 3/8" TUBE ELBOW CONNECTOR	A.B.BRASS	01
13	7116-001-360	BUSH	S.S. A479	01
14	7105-027-021	INLET TUBE TO BE TRIMMED	S.S.	01
15	7105-027-021	OUTLET TUBE TO BE TRIMMED.	S.S.	01



## P05 SDCV MAIN VALVE

TYPE: 23 Series  
MWP: 1600kPa

The 23 series is a cost effective, reliable product designed specifically for applications in the building services, fire services, mining and irrigation markets. The reinforced diaphragm is designed to operate across the complete pressure range of the valve, providing leak tight shut off and stable control.

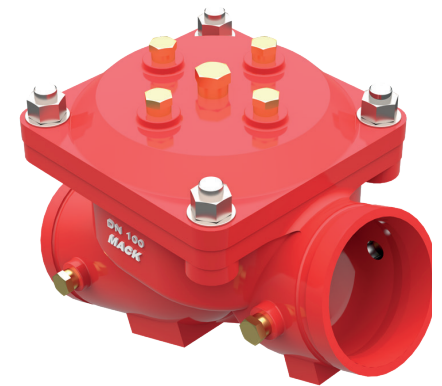
The Body and Cover are manufactured from FBE coated Ductile iron for added strength, reduced weight and corrosion protection.

### Applications:

The 23 Series range comes standard in ductile iron, FBE coated, and is available in sizes from 50mm to 150mm.

It is a diaphragm style valve, which is self-resetting, giving ease and reliability.

Mack's 23 series is used across the Fire Protection industries, wherever the demand for absolute dependability exists. It can be fitted for in variety of configurations, to ensure it does the job you need.



### Sizing and Performance

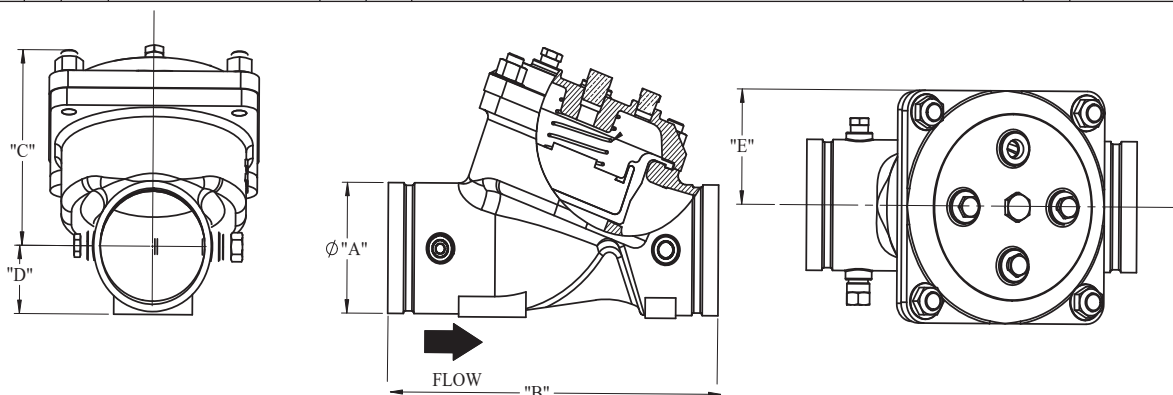
Maximum operation pressure 1600kPa  
Minimum differential pressure 35 kPa  
Maximum operating tempature 70c

### ACTIVFIRE Approvals

Mack series 23 valves have been assessed by the CSIRO as conforming to the relevant sections of Australian Standards: 4118.1.5-1996 & 4118.1.8-1999

### Single Diaphragm Control Valves

23		#			##			###
Base No.	-	Body Material		-	Pilot Configuration		-	Size
23		6	Ductile Iron		22	No Pilot		050
23		6	Ductile Iron		22	No Pilot		080
23		6	Ductile Iron		22	No Pilot		100
23		6	Ductile Iron		22	No Pilot		150

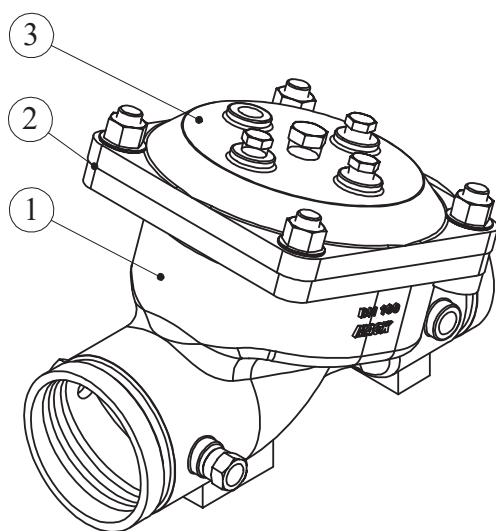


Dimensions										Volume of cover chamber (L)	Weight (Kg)	
	A Inlet OD	B Length	C C/Line To Top	D C/Line To Bottom	E Width	F Width	Flow Range (L/sec)	LPS/√kPa	USGPM/√psi			m3/Hr/√M
50mm	60.3	205	101	35	65	170	0.7-14.5	1.45	60.6	4.5	0.16	5
80mm	88.9	250	141	50	85	175	1.5-28.0	2.95	122.9	9.2	0.38	10
100mm	114.3	320	171	60	105	185	1.8-50.0	5.10	214.5	15.8	0.73	19
150mm	165.1	415	251	85	145	220	2.5-112.0	11.50	476.0	35.6	2.00	43

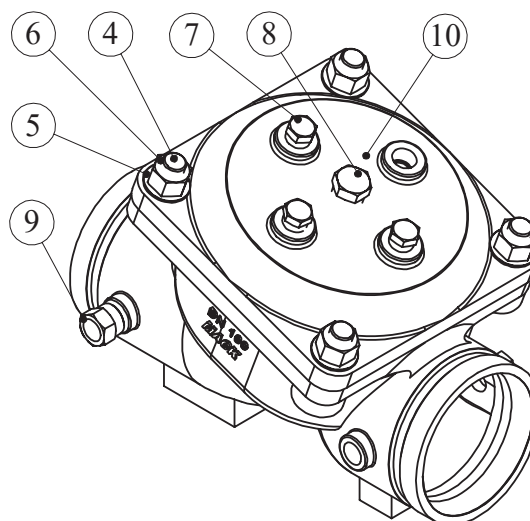
# SDCV BASE VALVE

**P  
06**

TYPE:23 Series  
MWP: 1600 kPa

**50mm Single Diaphragm Valve Body**

Item No.	Part Number	Description	Material	Qty
01	7061-001-002	BODY	C.S.G.C.I.	01
02	7061-003-246	DIAPHRAGM	NAT.R-NY	01
03	7061-002-002	COVER	C.S.G.C.I.	01
04	6604-H15-362	STUD	A4-80 S.S.	04
05	6615-H00-021	FLAT WASHER	S.S.	04
06	6610-H00-363	HEX NUT	A4-80 S.S.	04

**80mm Single Diaphragm Valve Body**

Item No.	Part Number	Description	Material	Qty
01	7060-001-002	BODY	C.S.G.C.I.	01
02	7060-003-246	DIAPHRAGM	NAT.R-NY	01
03	7060-002-002	COVER	C.S.G.C.I.	01
04	6604-J17-362	STUD	A4-80 S.S.	04
05	6615-J00-021	FLAT WASHER	S.S.	04
06	6610-J00-363	HEX NUT	A4-80 S.S.	04

**100mm Single Diaphragm Valve Body**

Item No.	Part Number	Description	Material	Qty
01	7058-001-002	BODY	C.S.G.C.I.	01
02	7058-003-246	DIAPHRAGM	NAT.R-NY	01
03	7058-002-002	COVER	C.S.G.C.I.	01
04	6604-L19-362	STUD	A4-80 S.S.	04
05	6615-L00-021	FLAT WASHER	S.S.	04
06	6610-L00-363	HEX NUT	A4-80 S.S.	04

**150mm Single Diaphragm Valve Body**

Item No.	Part Number	Description	Material	Qty
01	7059-001-002	BODY	C.S.G.C.I.	01
02	7059-003-246	DIAPHRAGM	NAT.R-NY	01
03	7059-002-002	COVER	C.S.G.C.I.	01
04	6604-N26-362	STUD	A4-80 S.S.	04
05	6615-N00-021	FLAT WASHER	S.S.	04
06	6610-N00-363	HEX NUT	A4-80 S.S.	04

Item No.	Part Number	Description	Material	Qty
07	9214-C00-034	3/8" BSPT PLUG	A.B.BRASS	01
08	9214-D00-034	1/2" BSPT PLUG	A.B.BRASS	01
09	431-2-010	FINGER STRAINER	S.S.	01
10	3606-006-062	SPRING (50mm ONLY)	316 S.S. A313	01

## P07 SDCV STANDARD FLOAT VALVE

TYPE: 23 Series  
MWP: 1600kPa

The 23 series is a cost effective, reliable product designed specifically for applications in the building services, fire services, mining and irrigation markets. The reinforced diaphragm is designed to operate across the complete pressure range of the valve, providing leak tight shut off and stable control.

The Body and Cover are manufactured from FBE coated Ductile iron for added strength, reduced weight and corrosion protection.

### Applications:

A remotely located ball float pilot is used to open or close the main valve and control the tank level.

Both cistern cock and sliding float style pilots are available to suit a range of tank types and applications.

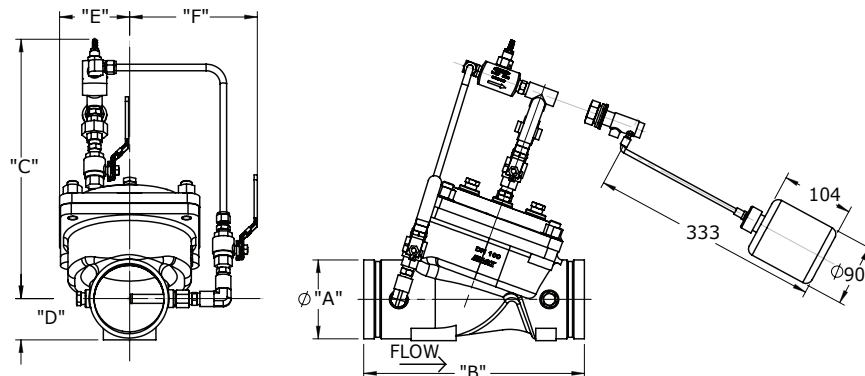


### Sizing and Performance

Maximum operation pressure 1600kPa  
Minimum differential pressure 35 kPa  
Maximum operating temperture 70c

### Single Diaphragm Control Valves

23	#	##	###
Base No.	Body Material	Pilot Configuration	Size
23	6 Ductile Iron	23 Standard Float Valve	050
23	6 Ductile Iron	23 Standard Float Valve	080
23	6 Ductile Iron	23 Standard Float Valve	100
23	6 Ductile Iron	23 Standard Float Valve	150

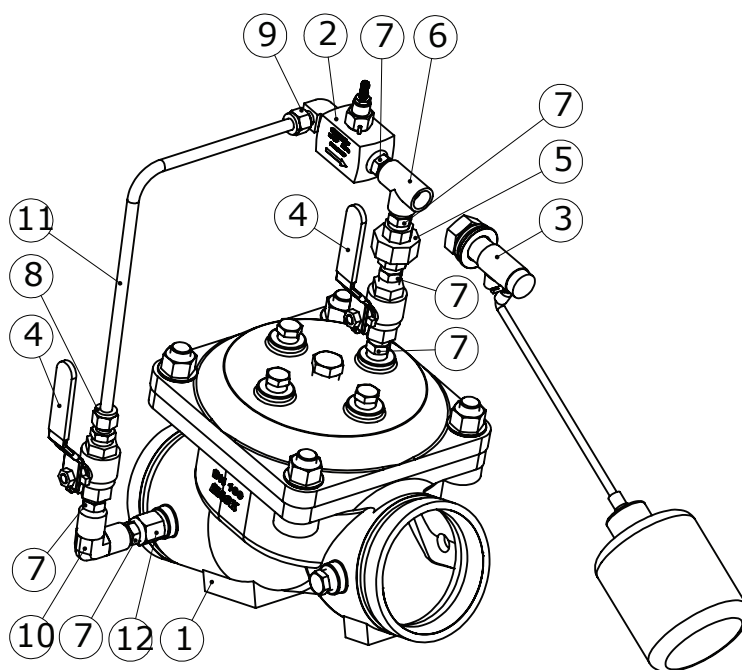


Dimensions										Volume of cover chamber (L)	Weight (Kg)	
	A Inlet OD	B Length	C C/Line To Top	D C/Line To Bottom	E Width	F Width	Flow Range (L/sec)	LPS/√kPa	USGPM/√psi			m3/Hr/√M
50mm	60.3	205	300	35	65	170	0.7-14.5	1.45	60.6	4.5	0.16	7
80mm	88.9	250	330	50	85	180	1.5-28.0	2.95	122.9	9.2	0.38	13
100mm	114.3	320	375	60	105	195	1.8-50.0	5.10	214.5	15.8	0.73	20.5
150mm	165.1	415	400	85	145	225	2.5-112.0	11.50	476.0	35.6	2.00	48

# SDCV STANDARD FLOAT VALVE

**P  
08**

TYPE:23 Series  
MWP: 1600 kPa



Item No.	Part Number	Description	Material	Qty
01	23-6-XXX	SDCV MAIN VALVE ASSY.	Refer BOM	01
02	428-2-010	NEEDLE VALVE	Refer BOM	01
03	433-1-015	STANDARD FLOAT VALVE.	Refer BOM	01
04	5098-010	BALL VALVE BSPT	SS/PTFE	02
05	9202-C03-034	BARREL UNION 3/8" BSPP FEMALE x FEMALE	A.B.BRASS	01
06	9224-C03-034	ALL FEMALE TEE 3/8" BSPT	A.B.BRASS	01
07	9215-C03-034	HEX NIPPLE 3/8" BSPT MALE	A.B.BRASS	06
08	9206-C03-034	STRAIGHT CONNECTOR 3/8" BSPT X 3/8" TUBE	A.B.BRASS	01
09	9213-C03-034	ELBOW CONNECTOR 3/8" BSPT X 3/8" TUBE	A.B.BRASS	01
10	9209-C03-034	ELBOW 3/8" BSPT FEMALE - FEMALE	A.B.BRASS	01
11	7105-027-021	INLET TUBE TO BE TRIMMED	S.S.	01

**P  
09**

## SDCV MODULATING FLOAT VALVE

TYPE: 23 Series  
MWP: 1600kPa

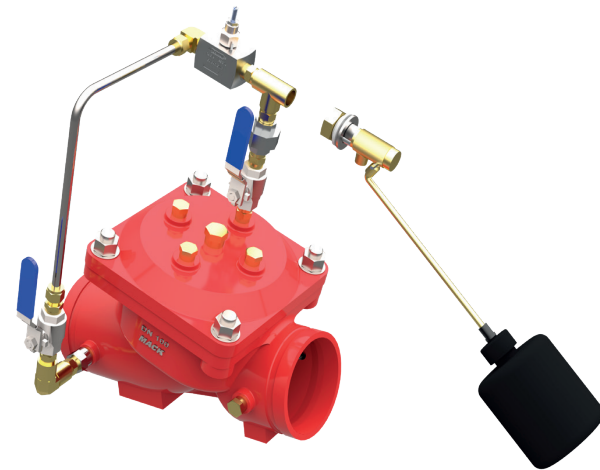
The 23 series is a cost effective, reliable product designed specifically for applications in the building services, fire services, mining and irrigation markets. The reinforced diaphragm is designed to operate across the complete pressure range of the valve, providing leak tight shut off and stable control.

The Body and Cover are manufactured from FBE coated Ductile iron for added strength, reduced weight and corrosion protection.

### Applications:

The modulating float control valve maintains a relatively constant level in storage tanks by admitting flow into the tank in direct proportion to the flow out of the tank.

As the liquid level changes, the modulating float operated pilot control adjusts flow out of the diaphragm chamber and proportionally opens or closes the main valve, keeping the liquid level relatively constant.

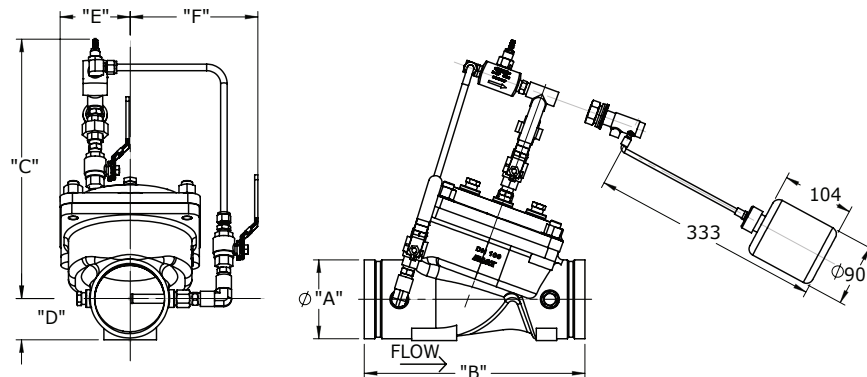


### Sizing and Performance

Maximum operation pressure 1600kPa  
Minimum differential pressure 35 kPa  
Maximum operating temperature 70°C

### Single Diaphragm Control Valves

23	#	##	###
Base No.	Body Material	Pilot Configuration	Size
23	6 Ductile Iron	25 Modulating Float Valve	050
23	6 Ductile Iron	25 Modulating Float Valve	080
23	6 Ductile Iron	25 Modulating Float Valve	100
23	6 Ductile Iron	25 Modulating Float Valve	150

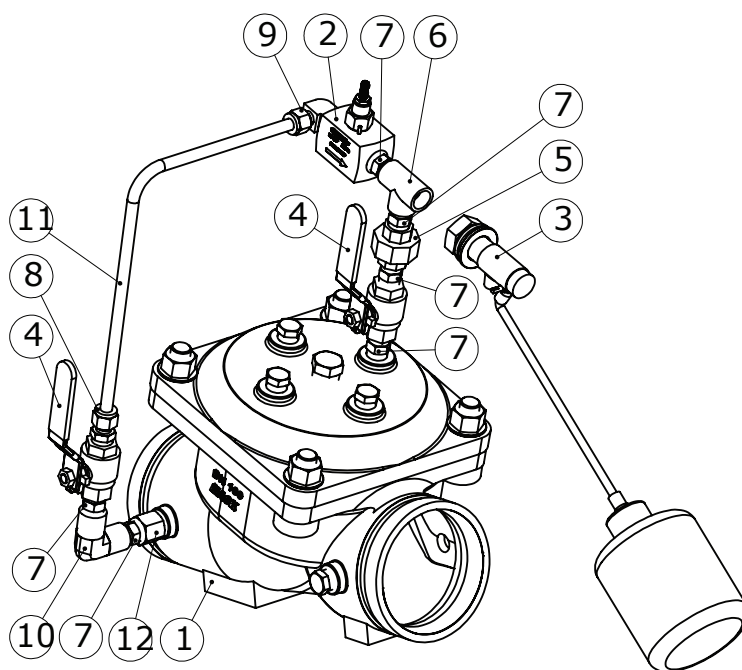


Dimensions											Volume of cover chamber (L)	Weight (Kg)
	A Inlet OD	B Length	C C/Line To Top	D C/Line To Bottom	E Width	F Width	Flow Range (L/sec)	LPS/√kPa	USGPM/√psi	m3/Hr/√M		
50mm	60.3	205	300	35	65	170	0.7-14.5	1.45	60.6	4.5	0.16	7
80mm	88.9	250	330	50	85	180	1.5-28.0	2.95	122.9	9.2	0.38	13
100mm	114.3	320	375	60	105	195	1.8-50.0	5.10	214.5	15.8	0.73	20.5
150mm	165.1	415	400	85	145	225	2.5-112.0	11.50	476.0	35.6	2.00	48

# SDCV MODULATING FLOAT VALVE

**P  
10**

TYPE:23 Series  
MWP: 1600 kPa



Item No.	Part Number	Description	Material	Qty
01	23-6-XXX	SDCV MAIN VALVE ASSY.	Refer BOM	01
02	428-2-010	NEEDLE VALVE	Refer BOM	01
03	434-1-015	MODULATING FLOAT VALVE	Refer BOM	01
04	5098-010	BALL VALVE BSPT	SS/PTFE	02
05	9202-C03-034	BARREL UNION 3/8" BSPP FEMALE x FEMALE	A.B.BRASS	01
06	9224-C03-034	ALL FEMALE TEE 3/8" BSPT	A.B.BRASS	01
07	9215-C03-034	HEX NIPPLE 3/8" BSPT MALE	A.B.BRASS	06
08	9206-C03-034	STRAIGHT CONNECTOR 3/8" BSPT X 3/8" TUBE	A.B.BRASS	01
09	9213-C03-034	ELBOW CONNECTOR 3/8" BSPT X 3/8" TUBE	A.B.BRASS	01
10	9209-C03-034	ELBOW 3/8" BSPT FEMALE - FEMALE	A.B.BRASS	01
11	7105-027-021	INLET TUBE TO BE TRIMMED	S.S.	01



## P 11 SDCV SOLENOID VALVE

TYPE: 23 Series  
MWP: 1600kPa

The 23 series is a cost effective, reliable product designed specifically for applications in the building services, fire services, mining and irrigation markets. The reinforced diaphragm is designed to operate across the complete pressure range of the valve, providing leak tight shut off and stable control.

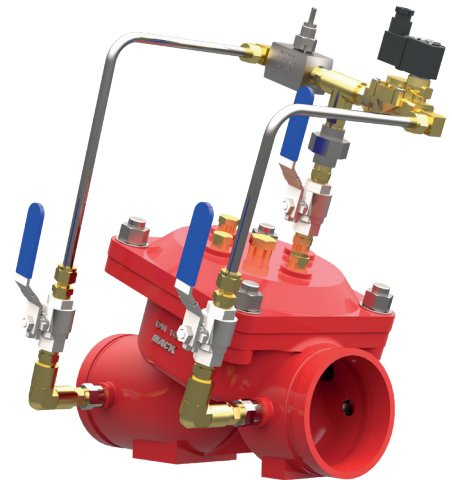
The Body and Cover are manufactured from FBE coated Ductile iron for added strength, reduced weight and corrosion protection.

### Applications:

A normally closed pilot solenoid is used to open the main valve when power is applied.

By using an electrical signal to open or close the main valve this produces a very cost effective actuated valve that can be integrated into any system using electronic control or switching.

Remote operation, level control, wash down or fire service are typical applications.



### Sizing and Performance

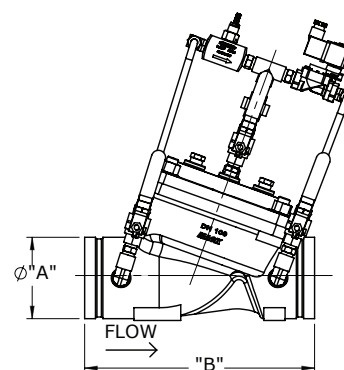
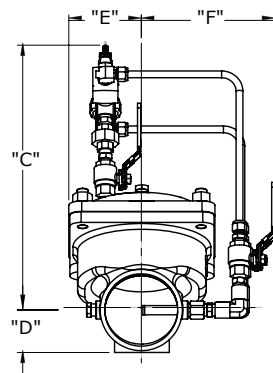
Maximum operation pressure 1600kPa  
Minimum differential pressure 35 kPa  
Maximum operating tempature 70c

### ACTIVFIRE Approvals

Mack series 23 valves have been assessed by the CSIRO as conforming to the relevant sections of Australian Standards: 4118.1.5-1996 & 4118.1.8-1999

### Single Diaphragm Control Valves

23	#	##	###
Base No.	- Body Material	- Pilot Configuration	- Size
23	6 Ductile Iron	26 Solenoid	050
23	6 Ductile Iron	26 Solenoid	080
23	6 Ductile Iron	26 Solenoid	100
23	6 Ductile Iron	26 Solenoid	150

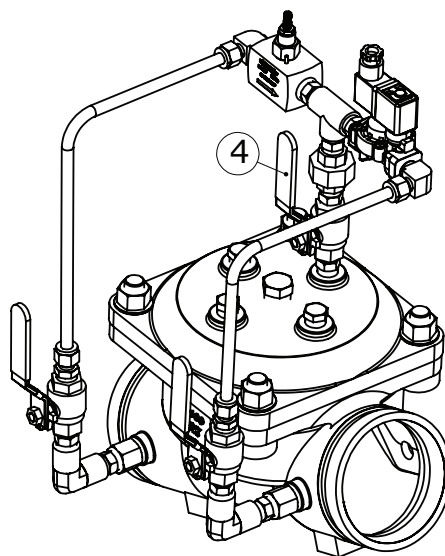
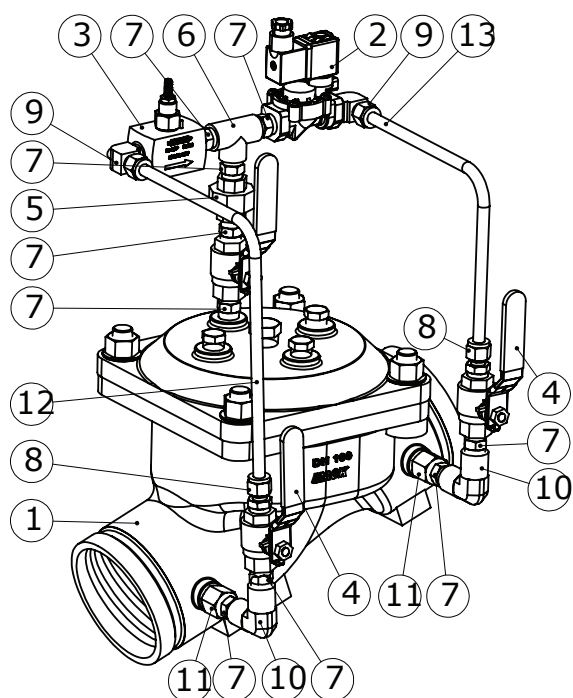


Dimensions										Volume of cover chamber (L)	Weight (Kg)	
	A Inlet OD	B Length	C C/Line To Top	D C/Line To Bottom	E Width	F Width	Flow Range (L/sec)	LPS/√kPa	USGPM/√psi			m3/Hr/√M
50mm	60.3	205	305	35	65	170	0.7-14.5	1.45	60.6	4.5	0.16	7
80mm	88.9	250	330	50	85	175	1.5-28.0	2.95	122.9	9.2	0.38	13
100mm	114.3	320	365	60	105	190	1.8-50.0	5.10	214.5	15.8	0.73	20.5
150mm	165.1	415	420	85	145	225	2.5-112.0	11.50	476.0	35.6	2.00	48

## SDCV SOLENIOD VALVE

**P  
12**

TYPE:23 Series  
MWP: 1600 kPa



Item No.	Part Number	Description	Material	Qty
01	23-6-XXX	SDCV MAIN VALVE ASSY.	Refer BOM	01
02	432-1-010	RAMCO RCD21	Refer BOM	01
03	428-2-010	NEEDLE VALVE	Refer BOM	01
04	5098-010	BALL VALVE BSPT	SS/PTFE	03
05	9202-C03-034	BARREL UNION 3/8" BSPP FEMALE x FEMALE	A.B.BRASS	01
06	9224-C03-034	ALL FEMALE TEE, 3/8" BSPT	A.B.BRASS	01
07	9215-C03-034	HEX NIPPLE 3/8 BSPT MALE	A.B.BRASS	09
08	9206-C03-034	STRAIGHT CONNECTOR 3/8" BSPT X 3/8" TUBE	A.B.BRASS	02
09	9213-C03-034	ELBOW CONNECTOR 3/8" BSPT X 3/8" TUBE	A.B.BRASS	02
10	9209-C03-034	ELBOW 3/8" BSPT FEMALE - FEMALE	A.B.BRASS	02
11	7116-001-360	BUSH	S.S. A479	01
12	7105-027-021	INLET TUBE TO BE TRIMMED	S.S.	01
13	7105-027-021	OUTLET TUBE TO BE TRIMMED	S.S.	01

**P  
13**

## SDCV DELUGE VALVE

TYPE: 23 Series  
MWP: 1600kPa

The 23 series is a cost effective, reliable product designed specifically for applications in the building services, fire services, mining and irrigation markets. The reinforced diaphragm is designed to operate across the complete pressure range of the valve, providing leak tight shut off and stable control.

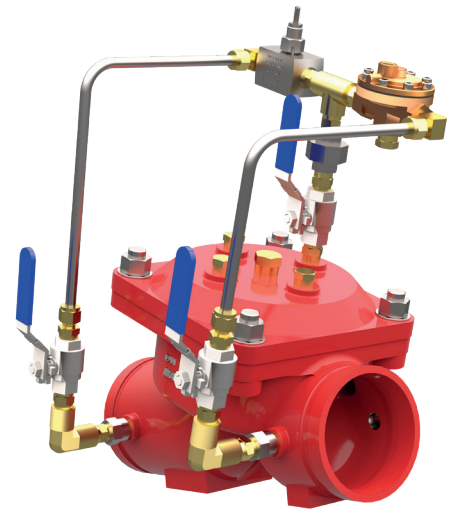
The Body and Cover are manufactured from FBE coated Ductile iron for added strength, reduced weight and corrosion protection.

### Applications:

Deluge Valves are used in high hazard fire zones to provide suppressant to sprinkler zones when a fire is sensed.

They are available in either air operated or solenoid operated dependent on system sensors. A pressure reducing function can be added to provide a specific flow at each sprinkler head within the zone.

Used for deluge fire protection systems in tunnels and large hazardous areas.



### Sizing and Performance

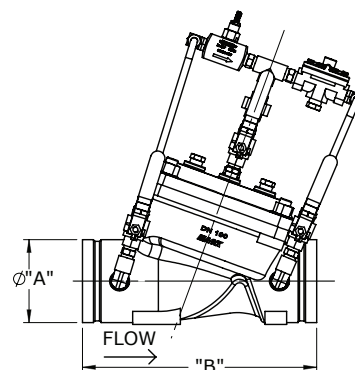
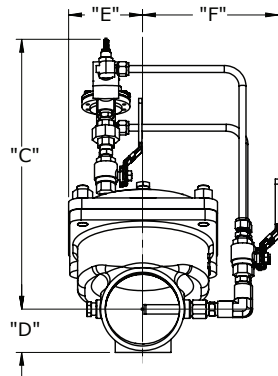
Maximum operation pressure 1600kPa  
Minimum differential pressure 35 kPa  
Maximum operating tempature 70c

### ACTIVFIRE Approvals

Mack series 23 valves have been assessed by the CSIRO as conforming to the relevant sections of Australian Standards: 4118.1.5-1996 & 4118.1.8-1999

### Single Diaphragm Control Valves

23	#	##	###
Base No.	- Body Material	- Pilot Configuration	- Size
23	6 Ductile Iron	47 Deluge	050
23	6 Ductile Iron	47 Deluge	080
23	6 Ductile Iron	47 Deluge	100
23	6 Ductile Iron	47 Deluge	150

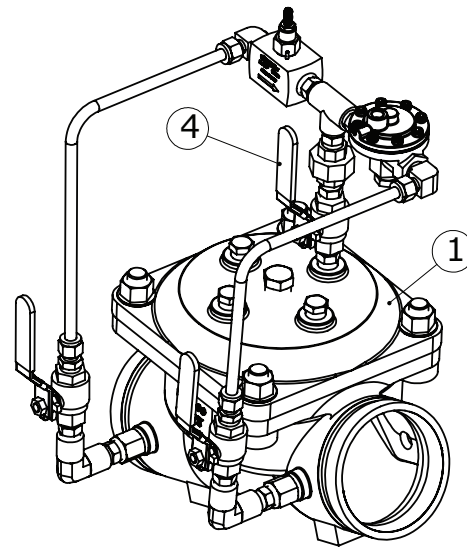
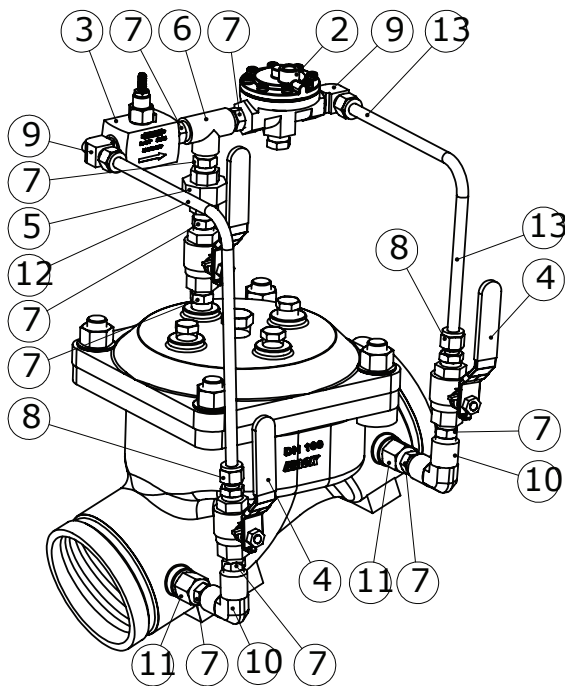


Dimensions										Volume of cover chamber (L)	Weight (Kg)	
	A Inlet OD	B Length	C C/Line To Top	D C/Line To Bottom	E Width	F Width	Flow Range (L/sec)	LPS/√kPa	USGPM/√psi			m3/Hr/√M
50mm	60.3	205	305	35	65	170	0.7-14.5	1.45	60.6	4.5	0.16	7
80mm	88.9	250	330	50	85	175	1.5-28.0	2.95	122.9	9.2	0.38	13
100mm	114.3	320	365	60	105	190	1.8-50.0	5.10	214.5	15.8	0.73	20.5
150mm	165.1	415	420	85	145	225	2.5-112.0	11.50	476.0	35.6	2.00	48

## SDCV DELUGE VALVE

TYPE:23 Series  
MWP: 1600 kPa

**P  
14**



Item No.	Part Number	Description	Material	Qty
01	23-6-XXX	SDCV MAIN VALVE ASSY.	Refer BOM	01
02	423-1-010	10mm ACV VALVE	Refer BOM	01
03	428-2-010	NEEDLE VALVE	Refer BOM	01
04	5098-010	BALL VALVE BSPT	SS/PTFE	03
05	9202-C03-034	BARREL UNION 3/8" BSPP FEMALE x FEMALE	A.B.BRASS	01
06	9224-C03-034	ALL FEMALE TEE, 3/8" BSPT	A.B.BRASS	01
07	9215-C03-034	HEX NIPPLE 3/8 BSPT MALE	A.B.BRASS	09
08	9206-C03-034	STRAIGHT CONNECTOR 3/8" BSPT X 3/8" TUBE	A.B.BRASS	02
09	9213-C03-034	ELBOW CONNECTOR 3/8" BSPT X 3/8" TUBE	A.B.BRASS	02
10	9209-C03-034	ELBOW 3/8" BSPT FEMALE - FEMALE	A.B.BRASS	02
11	7116-001-360	BUSH	S.S. A479	01
12	7105-027-021	INLET TUBE TO BE TRIMMED	S.S.	01
13	7105-027-021	OUTLET TUBE TO BE TRIMMED	S.S.	01