

Cryogenic, Steam, Water, Air & Gases
 Working Pressure 15 - 9,000kpa
 General Process Application



The 7E range represents the next evolution in Mack's 80 year history of supplying high quality, reliable safety/relief valves with the addition of a simplified, easy to use numbering and selection system.

This range of high flow safety and relief valves are specifically designed for applications where large vessels require higher relieving capacity. They activate in the instance of an over-pressure occurrence before the event becomes critical, protecting staff and valuable equipment.

Mack's 7E series is typically used to safeguard boilers, vessels and pipework from the risks of higher than desired pressures, ensuring protection for valuable resources while helping to avoid costly downtime.

SELECTION & APPLICATION

The 7E range is available in sizes from 15mm to 150mm, and in screwed, BSP, NPT and variety of other flanged connections. The 7E range suits applications across numerous industries including building services, Cryogenics, pharmaceuticals, mining and food & beverage. Simply select the gunmetal or stainless steel package, the size and the connection type, and set pressure. Should it be required, one of our Product Specialists can perform a sizing calculation for you based on your application parameters.

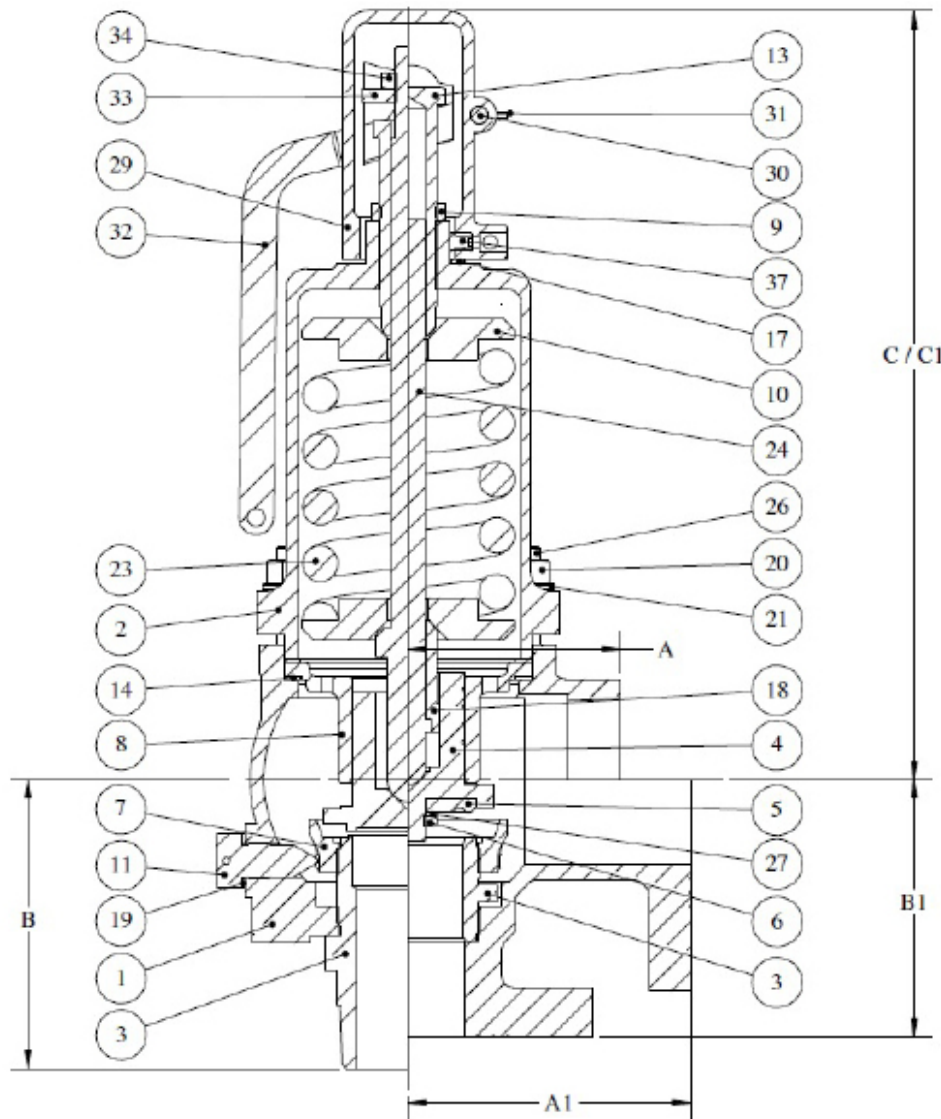
PRODUCT NUMBERING

High Lift Valves

7E	-	#	#	#	#	#	#	#	#	#	#	##	-	###			
Base No.	-	Material of Construction										Lever	Inlet Connection	- Size			
		Body, Cover, Cap		Seat		Valve		Seat Type		Gasket	Spindle				BD Ring		
7E		1	Bronze	2	BR	2	BR	1	Hard	Fibre	BR	BR	0	No	05	BSPT	015
		3	Stainless	3	SS	3	SS	2	Hard	PTFE	BR	BR	1	Yes	5A	NPT	020
								3	Soft	PTFE	BR	BR					025
								4	Hard	PTFE	SS	SS					040
								5	Soft	PTFE	SS	SS					050
																	080
																	100
																	150

NB: All Springs are Stainless Steel
 All Valves can be flanged
 All valves are degreased for Oxygen

All build options are available from Mack on special order, thus enabling clients to create their own specifications for their own specific needs, but our stock is based around common material specifications favoured by the cryogenic, steam and general process industries.



ITEM NO.	DESCRIPTION
1	Body
2	Spring Cover
3	Seat
4	Disc Holder / Valve
5	Disc (4)
6	Disk Locknut (4)
7	Blowdown Ring
8	Guide Plate
9	Locknut
10	Spring Pad
11	Lockscrew
12	Hex Plug (Not Shown)
13	Adjusting Screw
14	Gasket (3)
15	Nameplate (Not Shown)
16	Drive Pin (Not Shown)
17	Gasket (3)
18	Spindle Sleeve (40 & 50mm)
19	Lockscrew Gasket
20	Hex Nut (1)
21	Washer (1)
22	Tie Wire (Not Shown)
23	Spring
24	Spindle
26	Stud (1)
27	Disc Washer (4)
29	Lockup Top (2) / Cap (3)
30	Lever Pin (2)
31	Split Pin (2)
32	Lever (2)
33	Spindle Nut (2)
34	Locknut (2)
37	Grub Screw (2)

	CENTRE TO OUTLET FACE (Screwed)									INLET FACE TO CENTRE (Screwed)									CENTRE LINE TO TOP	
	A.	A1. #150 FF Brnz	A1. #300 FF Brnz	A1. #150 RF Brnz	A1. #300 RF Brnz	A1. Table H Brnz	A1. #150 CSS	A1. #300 CSS	A1. Table H CSS	B.	B1. #150 FF Brnz	B1. #300 FF Brnz	B1. #150 RF Brnz	B1. #300 RF Brnz	B1. Table H Brnz	B1. #150 CSS	B1. #300 CSS	B1. Table H CSS	C. Relief	C1. Safety
15mm	38	75	75	75	75	75	75	75	75	59	55	55	65	65	55	65	65	65	140	153
20mm	48	86	83	86	86	86	83	83	83	64	64	64	73	73	64	73	73	64	159	167
25mm	57	99	99	99	99	99	99	99	99	86	90	90	103	103	90	103	103	90	218	221
40mm	73	108	108	108	108	108	108	108	108	108	95	95	105	105	95	105	105	95	275	288
50mm	95	127	127	127	127	127	127	127	127	130	114	116	114	114	114	114	114	114	328	344
80mm	NA	165	165	164	165	165	164	164	165	NA	165	165	165	165	165	165	165	165	437	494
100mm	NA	184	184	184	184	184	184	184	184	NA	156	156	156	156	156	156	156	156	464	530
150mm	NA	240	240	240	240	240	240	240	240	NA	217	219	217	219	217	217	219	217	660	772

Notes:

- 1) Bolted cover for 50mm+ size valves only
- 2) Valve designed in accordance with AS1271
- 3) Valve tested in accordance with API 527

